

CHARLOTTE JACKSON FINE ART  
PRESENTS:

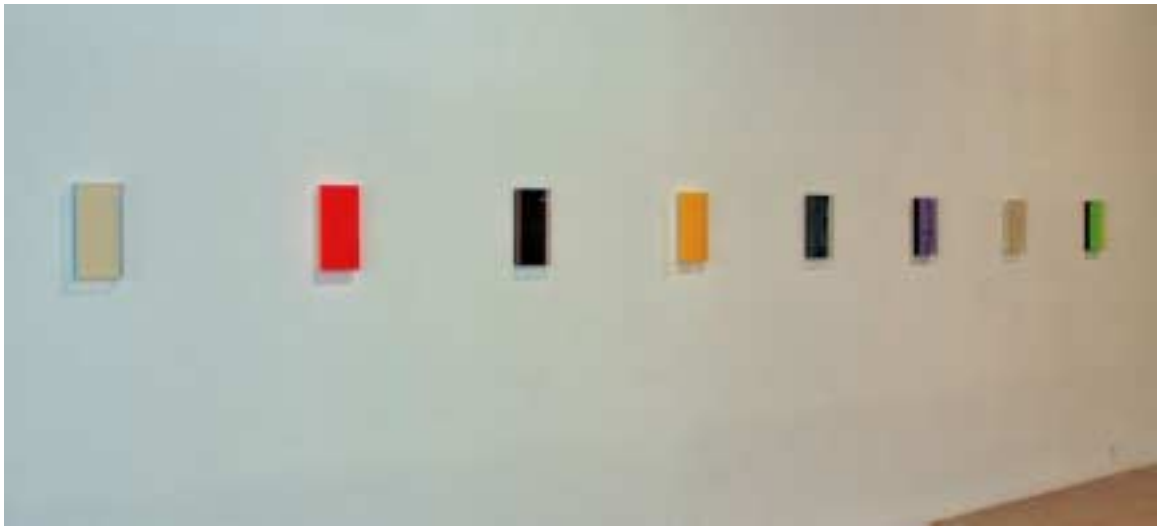
# GROUP SHOW



NOVEMBER 2012

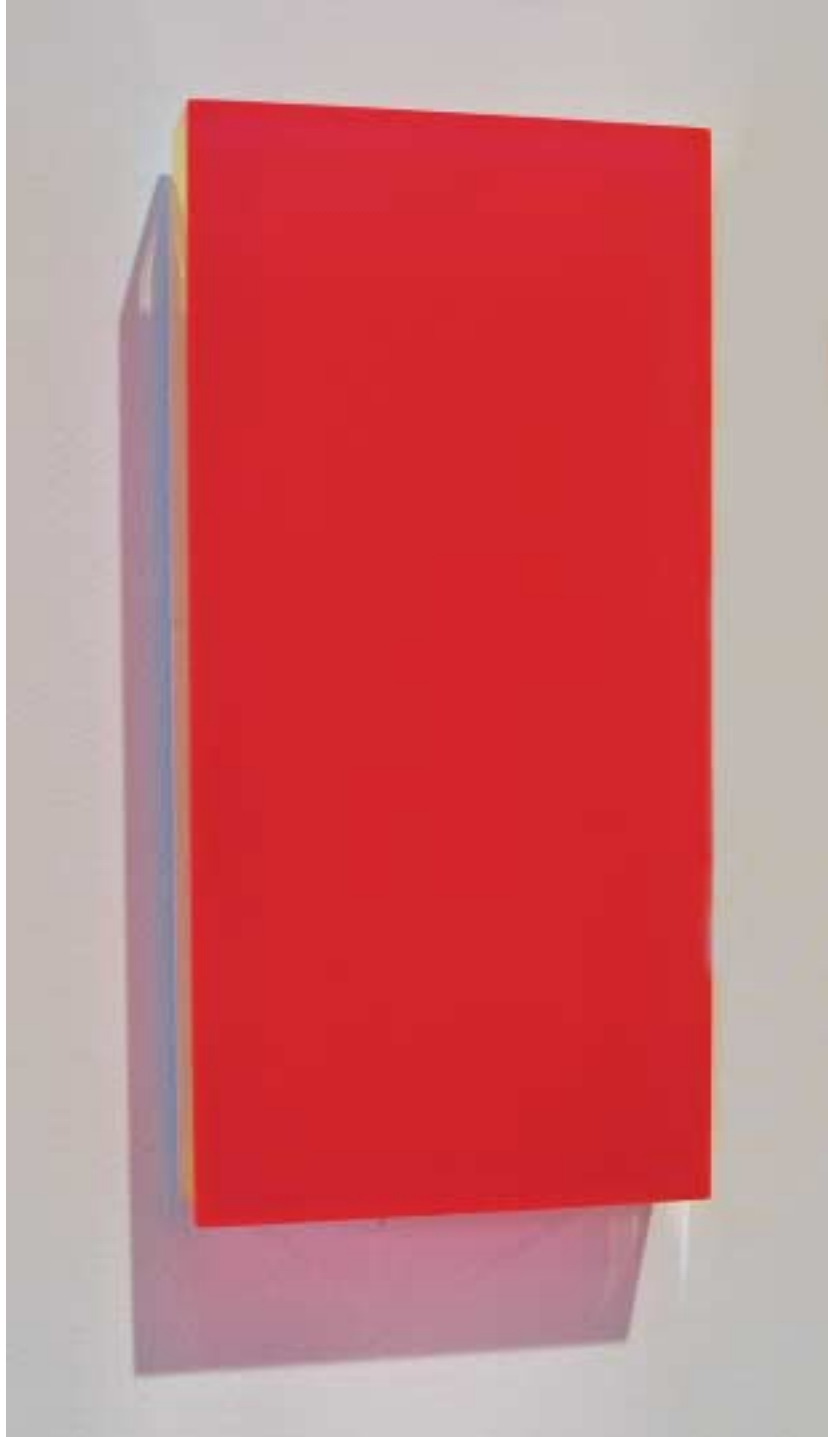








Regine Schumann  
Color Mirror Black and White, 2011  
Fluorescent acrylic glass  
11 3/4 x 5 3/4 x 1 1/2 inches  
RSC005A



Regine Schumann  
Color Mirror Black and White, 2011  
Fluorescent acrylic glass  
11 3/4 x 5 3/4 x 1 1/2 inches  
RSC005B



Regine Schumann  
Color Mirror Black and White, 2011  
Fluorescent acrylic glass  
11 3/4 x 5 3/4 x 1 1/2 inches  
RSC005C



Regine Schumann  
Color Mirror Black and White, 2011  
Fluorescent acrylic glass  
11 3/4 x 5 3/4 x 1 1/2 inches  
RSC005D

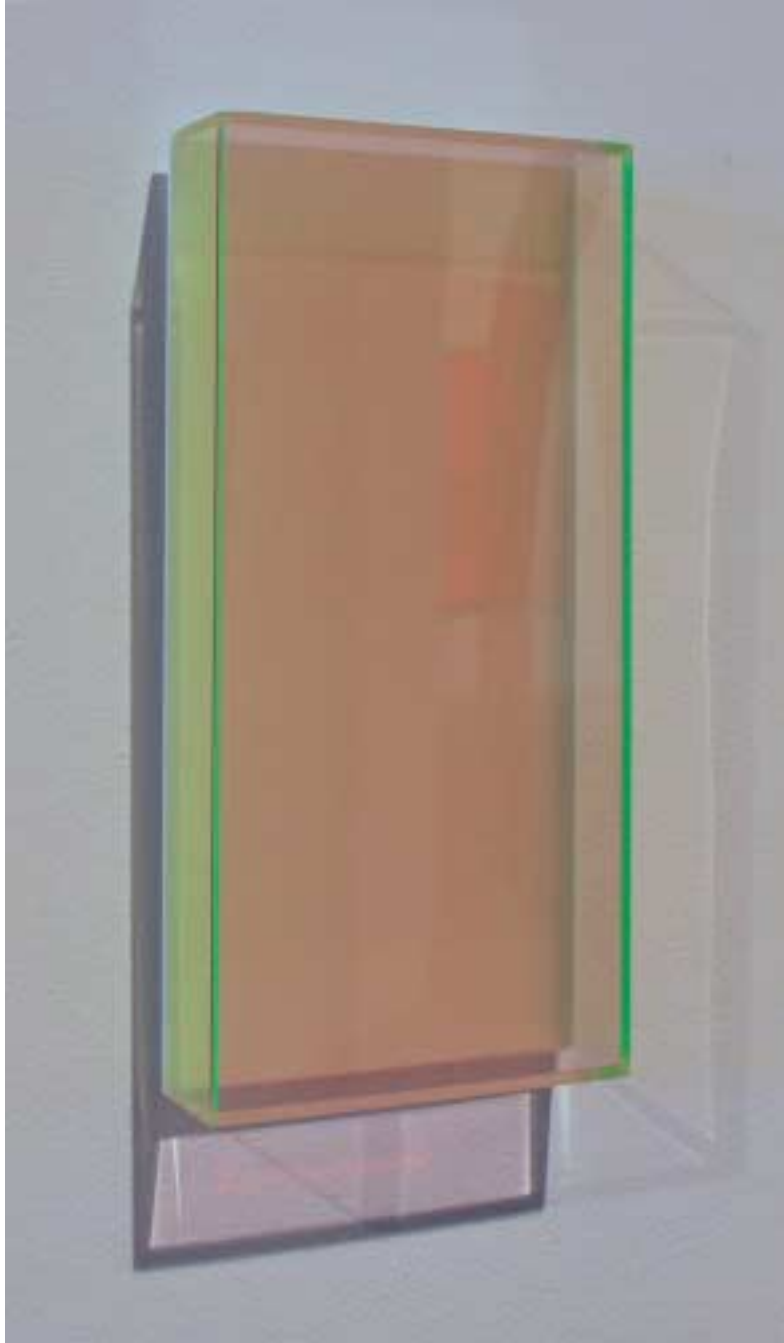




Regine Schumann  
Color Mirror Black and White, 2011  
Fluorescent acrylic glass  
11 3/4 x 5 3/4 x 1 1/2 inches  
RSC005E



Regine Schumann  
Color Mirror Black and White, 2011  
Fluorescent acrylic glass  
11 3/4 x 5 3/4 x 1 1/2 inches  
RSC005F



Regine Schumann  
Color Mirror Black and White, 2011  
Fluorescent acrylic glass  
11 3/4 x 5 3/4 x 1 1/2 inches  
RSC005G



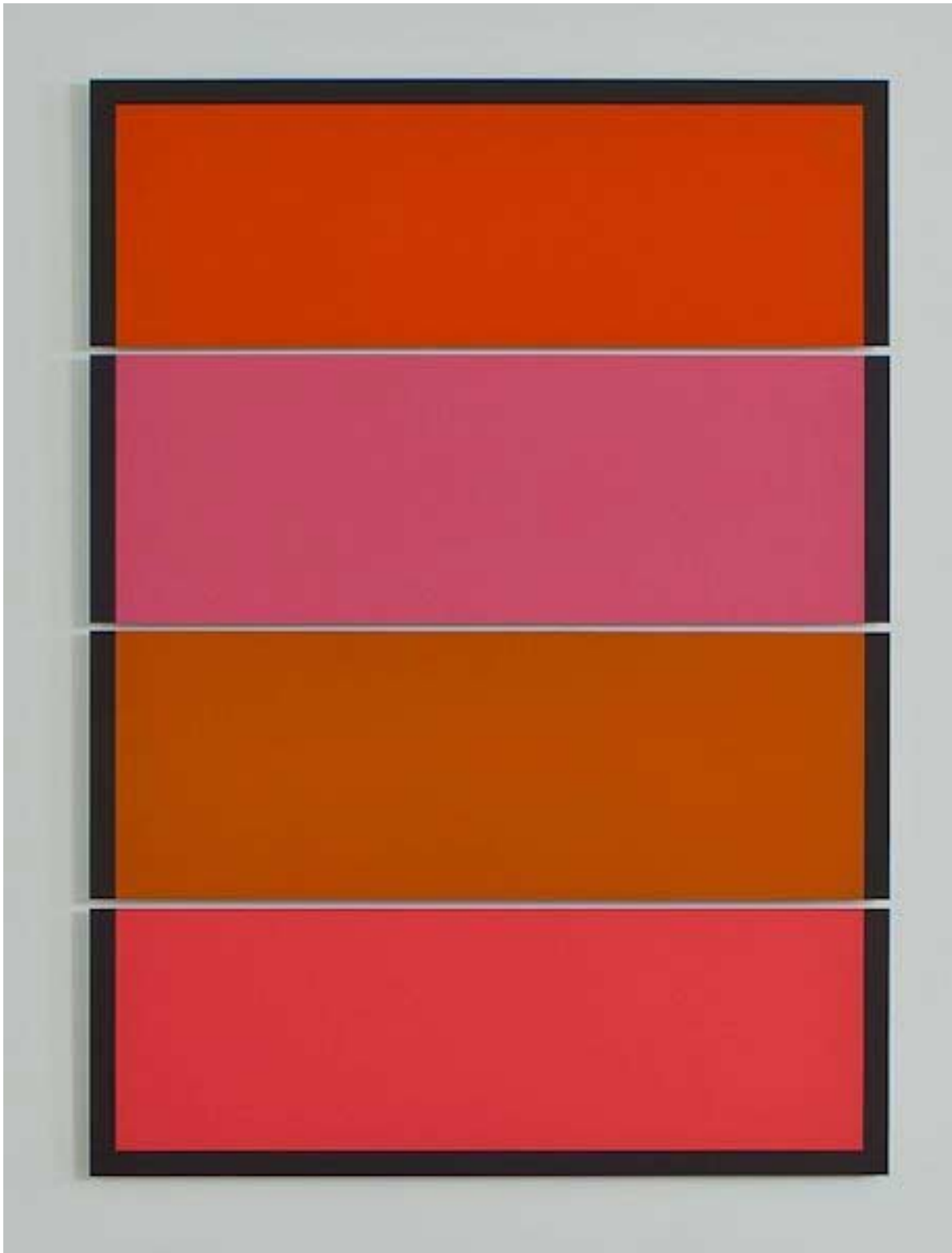
Regine Schumann  
Color Mirror Black and White, 2011  
Fluorescent acrylic glass  
11 3/4 x 5 3/4 x 1 1/2 inches  
RSC005H



William Metcalf  
Stainless Steel Arc, 2007  
Acrylic on polyester fabric, wood  
31 x 120 x 8 1/2 inches WM0080



Jeremy Thomas  
Fiatagri Orange, 2012  
forged mild steel and powder coat  
32 x 44 1/2 x 35 inches  
JT258



Winston Roeth  
Split Decision, 2012  
Pigment and polyurethane on Dibond  
83 x 60 inches  
WR018



Michael Rouillard, Addendum, 2008  
Oil and oil stick on aluminum 61 x 28 7/8 inches  
MR018

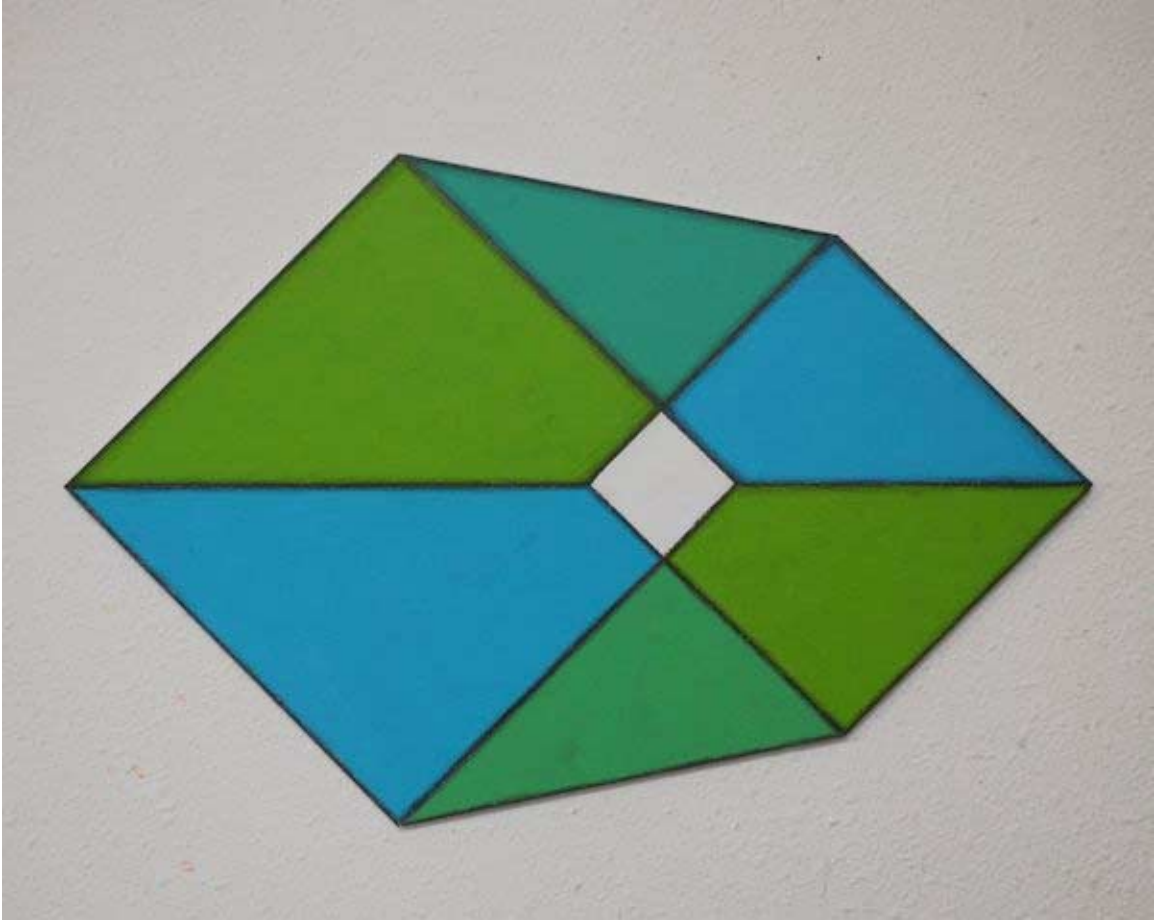


Constance DeJong, Cruciform X, 1991  
copper and wood, 40 x 10 x 8 inches  
CD118





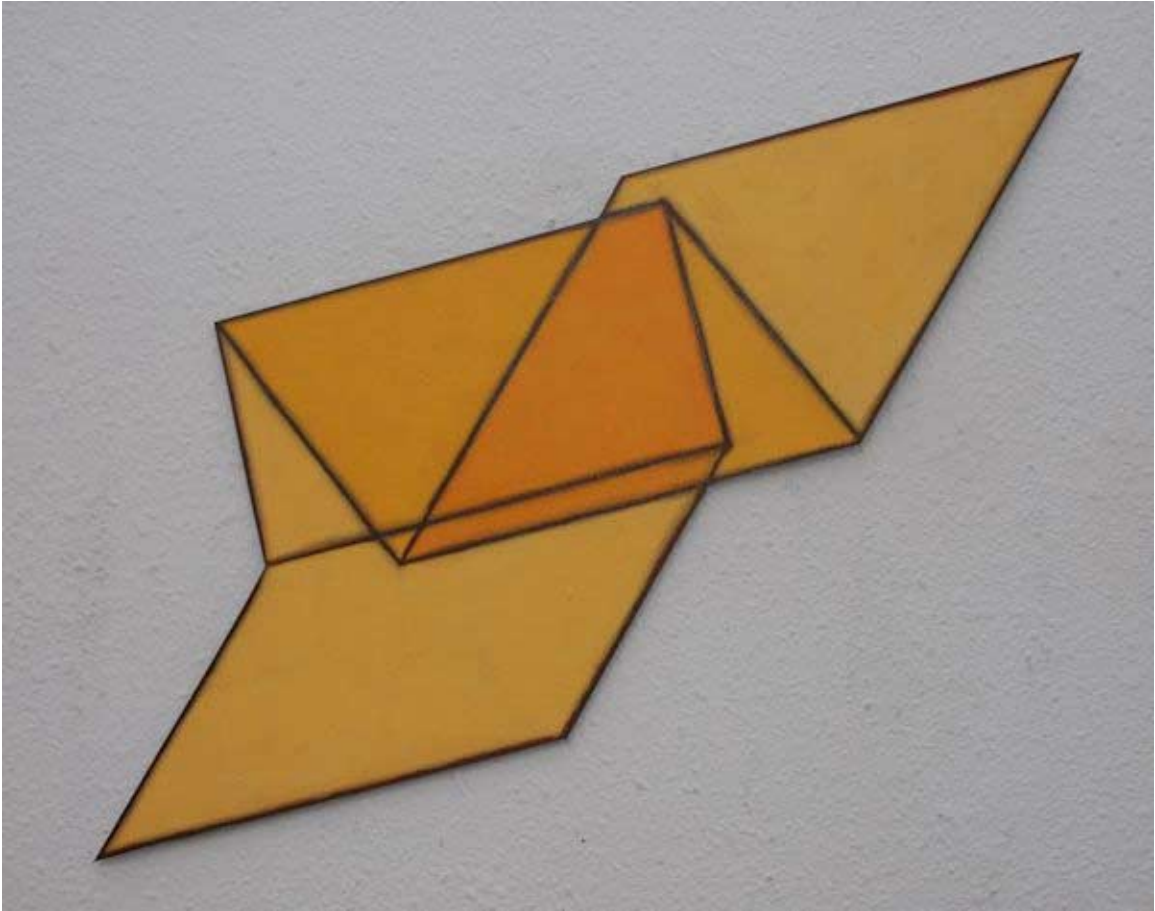
Tony DeLap  
Albaka, 2002  
Acrylic on Aluminum, Wood  
26 x 24 x 2 3/8 inches  
TD0015



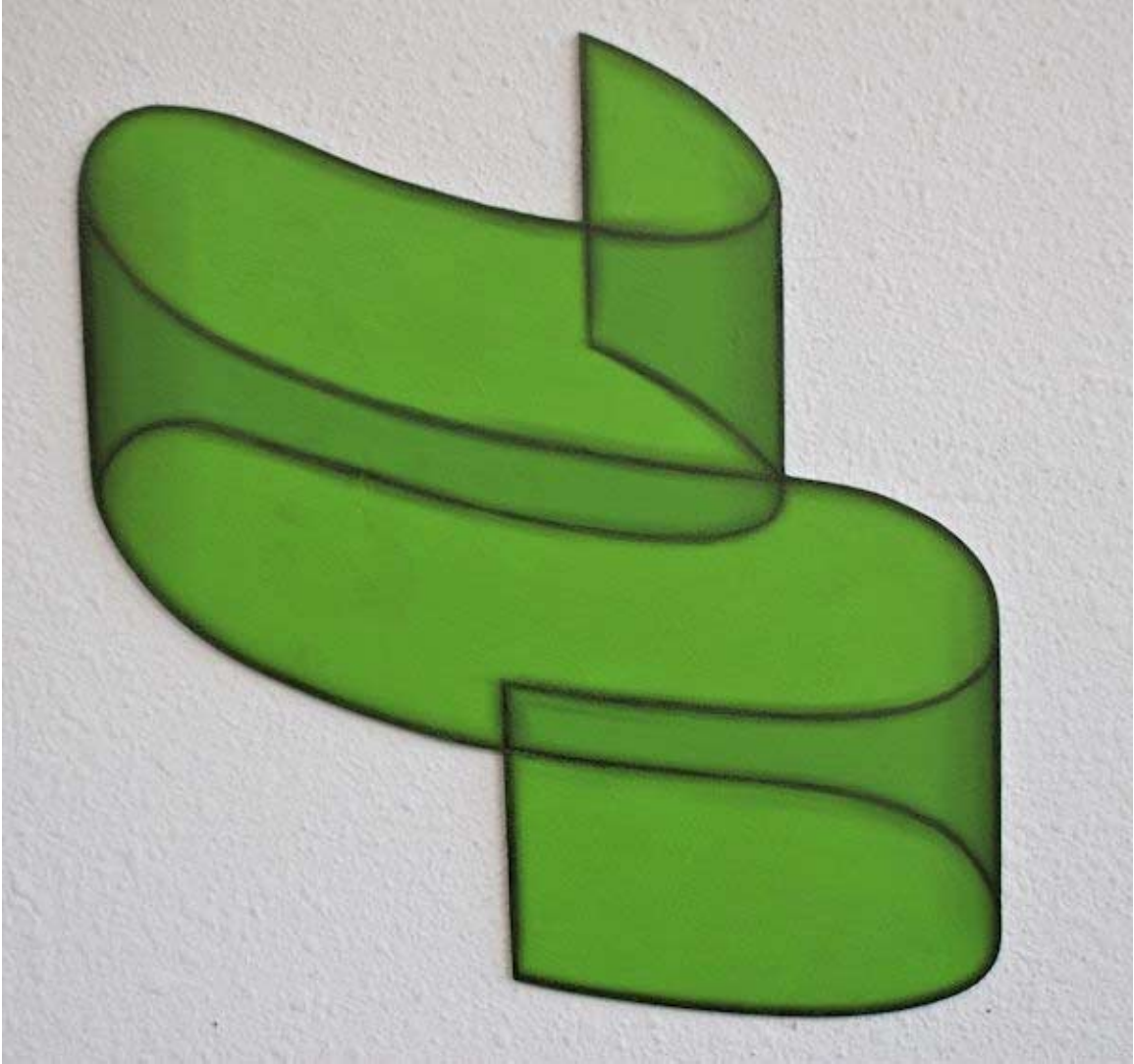
William Metcalf  
MindSpace #25, 2012  
Acrylic, graphite, Di Bond  
13 x 20 inches  
WM268



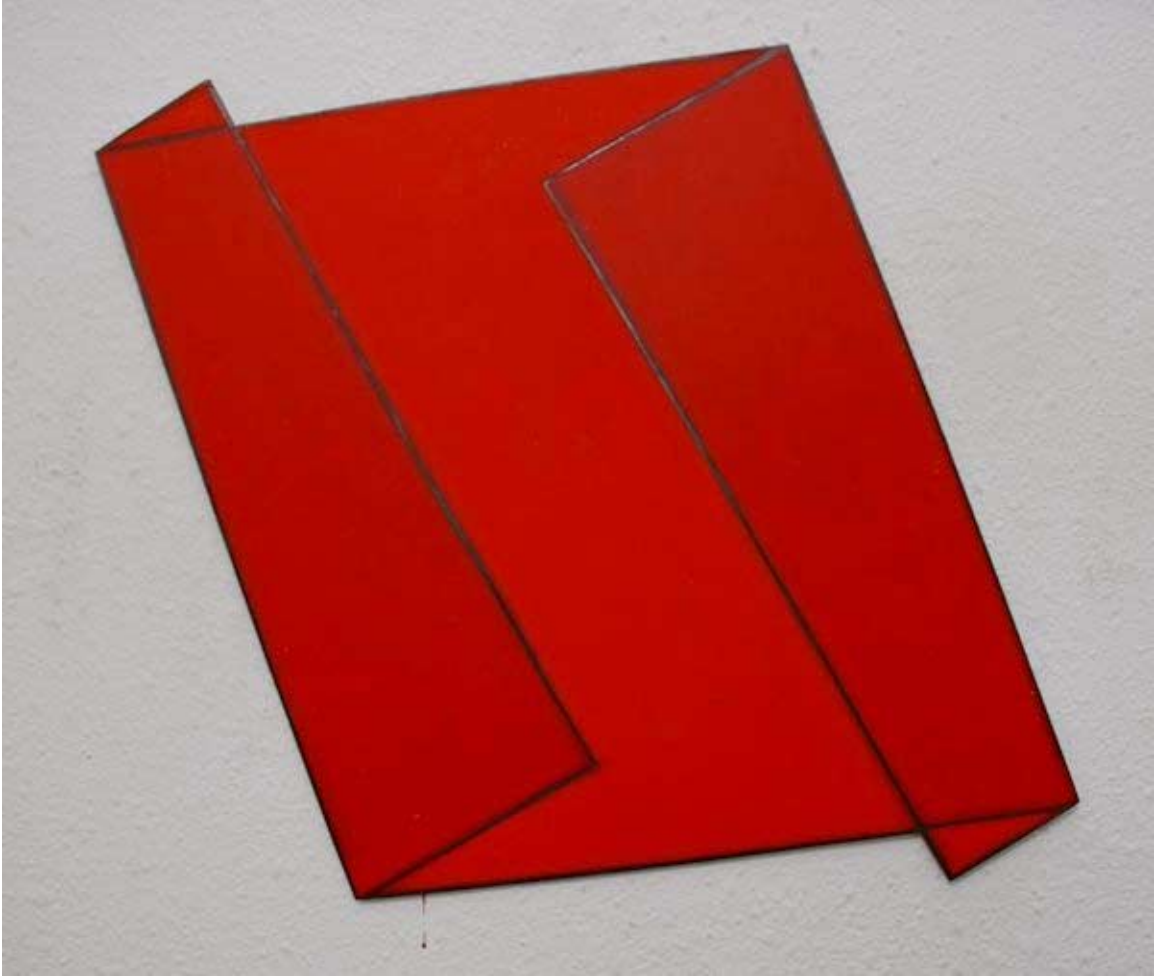
Jeremy Thomas  
Blue #2, 2008  
forged mild steel, and powder coat  
10 x 12 1/2 x 9 inches  
JT226



William Metcalf  
MindSpace #30, 2012  
Acrylic, graphite, Di Bond  
8 1/2 x 19 inches  
WM272



William Metcalf  
Mindspace #33, 2012  
Acrylic, graphite, Di Bond  
13 x 12 inches  
WM273



William Metcalf  
MindSpace #29, 2012  
Acrylic, graphite, Di Bond  
16 1/2 x 11 inches  
WM271





Robert Sagerman, 8,207 2009  
26 x 25 inches  
oil on canvasRS003

© 2012

# Charlotte Jackson Fine Art, Inc.

In the Railyard at:

554 S. Guadalupe, Santa Fe, New Mexico 87501

Telephone: 505.989.8688 Fax: 505.989.9898

[cjfa@charlottejackson.com](mailto:cjfa@charlottejackson.com) - [www.charlottejackson.com](http://www.charlottejackson.com)